

A Practical Guide to Power BI

What is Power BI?

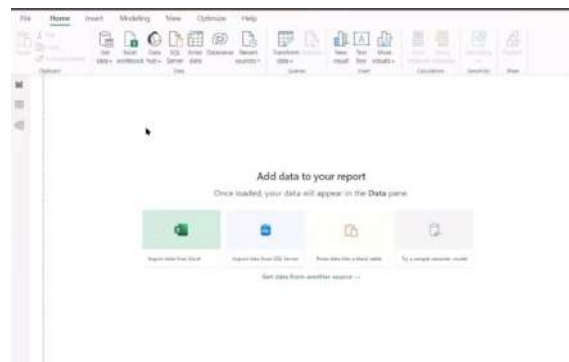
- Collection of software, services, applications, and connectors.
- Power BI can be a great tool for Accessibility.

When Should you Use Power BI?

- Report Collaboration and Delivery.
- Create and share dashboards with your team or organization.
- Create interactive reports.
- Can help you visualize your data.
- Automate and streamline business processes.

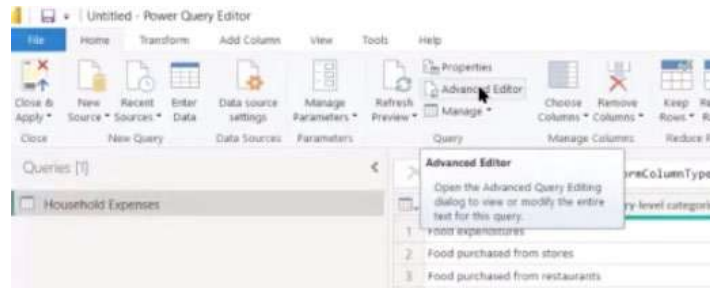
Display Data from Websites:

- Select web from the Get Data tab.
- Insert the link to the webpage.
- You can transform data by opening the Power Query Editor.



Advanced Editor

- Located in the Query section.
- Advanced Editor displays every step you took with your data.



Building Visuals

- Some visuals use Artificial Intelligence.
- Can select from column charts, line charts, bar charts and 1000s of other options!
- Can use the paintbrush to alter the visual – for example you could change the size, font, Y-axis and add a legend!

Excel and Power BI

- You can insert data from Power Query – similar to how you would insert data using Power BI.
- Visuals are only available inside of Power BI.

Power BI Licensing

- Power BI has three different options:
 1. Power BI Free
 2. Power BI Pro
 3. Power BI Premium

Catch the [Replay](#) or browse our [free resources](#). Ready for the next step? Register for [The Fundamentals of Power BI](#), [Becoming a Pro with Power BI](#) and [Excel Power Query](#) today!